



# Hermosa Naturals

Discover the Sustainable Beauty of Taiwan



## Sirayash Plantix® Banlay

Actives | • Reduce Redness • Youthful glow • Skin tone uniformity • Barrier Enhancement



### Product Information

- Category: : Aqueous Rosy and Translucent Skin Active
- Appearance: Transparent, Fluid
- Odor: Characteristic
- INCI Name: Aqua, Pentylene Glycol, Litsea Cubeba Fruit Extract ( China : Litsea Cubeba Extract ) , Ocimum Basilicum (Basil) Extract, Magnolia Acuminata Flower Extract
- CAS NO: 7732-18-5, 5343-92-0, 90063-59-5, 999999-99-4, 999999-99-4
- Certification:



### Formulation Characteristic

- Solubility: Water Soluble
- Recommended Use Level: 2-100%
- Application Direction: Skin Care, Makeup, Sun Care



▲ Sirayash Plantix® Banlay



### Product Introduction

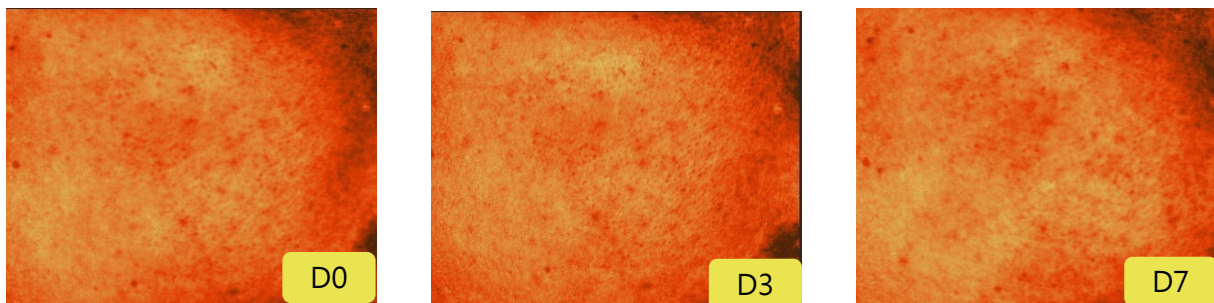
Sirayash Plantix® Banlay features **mountain pepper** from Hualien, Taiwan, known locally as “maqaw.” This endemic species grows at elevations of 200 to 1,000 meters and blooms with small, light yellow flowers in January and February, later bearing black fruits dubbed the “black pearls of the forest.” Harvested in summer, these fruits release a sweet lemon scent—**citral**—known for its regulatory effects on the central nervous system, aiding sleep, pain relief, and mood enhancement. Combined with eugenol and magnoflorine from **sweet basil** and **white magnolia** cultivated in Pingtung, Taiwan, this formulation enhances the skin barrier, evens skin tone, and promotes skin health, **resulting in a vibrant complexion and vitality.**

Hermosa Naturals Co., Ltd.

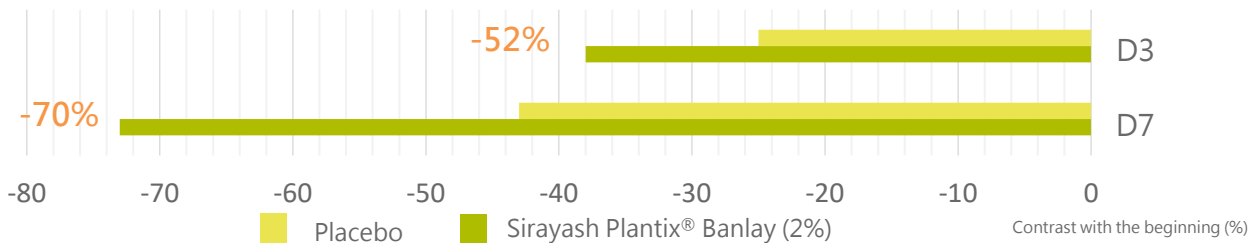
Tel:+886 6-5893566 Fax:+886 6-5893066

No. 188-17, Fengrong, Xinshi Dist., Tainan City 744010, Taiwan

- Revive dull skin and remove dark pigments



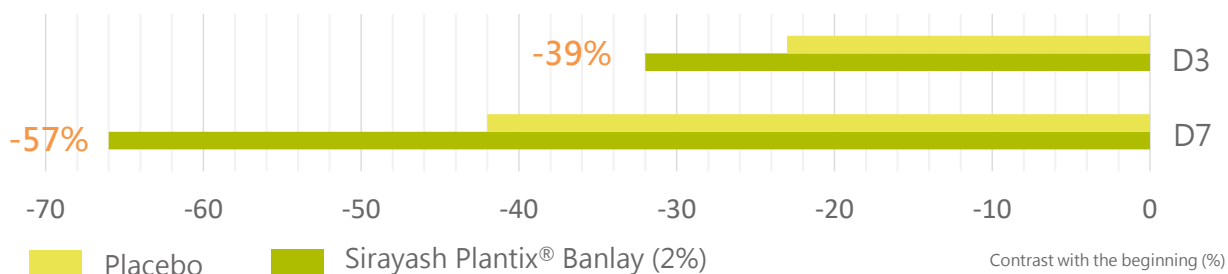
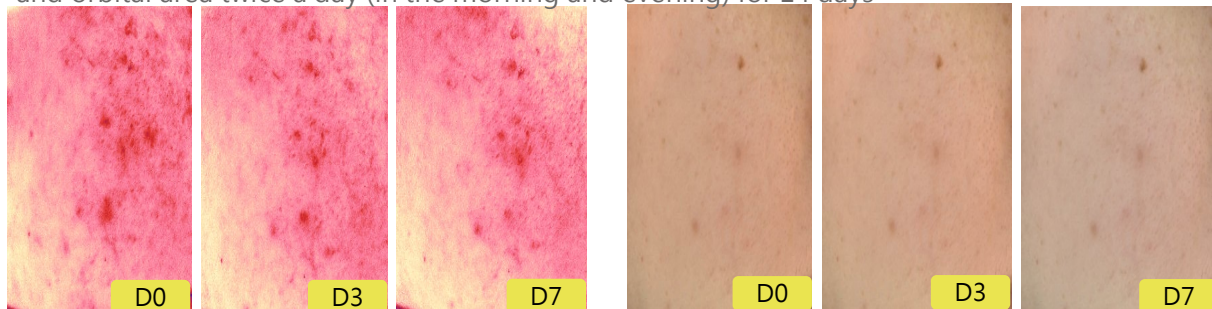
Test Equipment: Antera 3D / Procedure: 10 subjects were invited to apply the product on the face and orbital area twice a day (in the morning and evening) for 14 days



By using Sirayash Plantix® Banlay (2%)  
 3 days later, dark pigment on the cheek is reduced by 52%  
 7 days later, dark pigment on the cheek is reduced by 70%

- Skin tone uniformity (fading of flushing and increase of radiance with time)/or youthful glow

Test Equipment: Antera 3D / Procedure: 10 subjects were invited to apply the product on the face and orbital area twice a day (in the morning and evening) for 14 days



By using Sirayash Plantix® Banlay (2%)  
 3 days later, skin flushing reduced by 39%  
 7 days later, skin flushing reduced by 57%